



Super *SeaCam*[®]

5000

Low-Light CCD Camera

- 0.001 LUX SENSITIVITY
- 1/3 THE COST OF A SIT CAMERA
- CCD RELIABILITY – BURN RESISTANT
- 108 DEGREE ANGLE OF VIEW WITH DOME PORT
- AUTOMATIC BACKLIGHT COMPENSATION

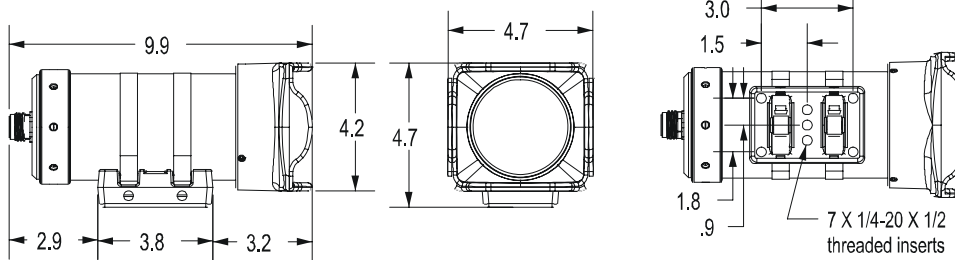


The Super *SeaCam*[®] 5000 underwater monochrome video camera produces excellent images at affordable prices and is designed for either low-light or long range viewing applications at depths to 6000 meters (20,000 feet). The Super *SeaCam*[®] 5000 is particularly suited for use as a primary navigation camera for any type of ROV application.

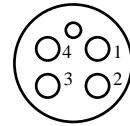
The Super *SeaCam*[®] 5000 is available with Titanium (6000m) or Aluminum (3000m) housings to suit your depth application. To ensure razor sharp image quality, the glass port is polished to optical standards and treated with an anti-reflective coating. A sturdy mounting bracket and Delrin™ crashguard are included.

DeepSea's lights, cameras, batteries, lasers and temperature sensors are used daily in the most demanding environments on planet Earth. The Super *SeaCam*[®] family of cameras continues our commitment to designing best-value products for the user who demands uncompromising quality, reliability and service.

Super SeaCam[®]5000 Specifications



Pin-out



BH4MP
 1 = Ground
 2 = Power
 3 = Video
 4 = Not Used

MECHANICAL

Material: Titanium, Aluminum
 Overall Length: 25.20 cm (9.90 in.)
 Outer Diameter: 9.45 cm (3.75 in.)
 Port: Optically polished glass
 Weight in Air: Ti- 2.95kg (6.50lbs)
 Al- 1.86kg (4.11lbs)
 Weight in Water: Ti- 1.54kg (3.41lbs)
 Al- 0.43kg (15 oz)

OPTICAL

Lens: 3.8 mm, f 0.80
 Focus: Fixed
 Working Dist: 60 cm to infinity
 Field of View in Water:
 With Dome Port: 108 deg (D) x 96 deg (H) x 78 deg. (V)
 With Flat Port: 80 deg. (D) x 69 deg. (H) x 53 deg. (V)

VIDEO

Image Sensor: 1/2-inch CCD Sensor
 Pixels: EIA: 768 (H) x 494 (V)
 CCIR: 752 (H) x 582 (V)
 Resolution: 570 lines horizontal
 Sensitivity: 0.001 Lux @ f 0.80
 Signal to Noise: More than 46 dB
 Video Out: Composite, 1.0 volt (peak to peak)
 Video Formats: EIA, CCIR

ELECTRICAL

Power: 9 – 30 VDC
 Current: 160 mA

ENVIRONMENTAL

Depth:	Titanium 6,000 m (20,000 ft)	Aluminum 3,000 m (10,000 ft.)
Operating Temp:	0 – 50 deg. C	
Storage Temp:	-20 – 60 deg. C	



Specifications subject to change without notice

DEEPSEA POWER & LIGHT • 4033 Ruffin Rd. • San Diego, CA 92123 USA • TEL (858) 576-1261 • FAX (858) 576-0219

Web: <http://www.deepsea.com> • e-mail: info@deepsea.com

Rev. 3/11/04