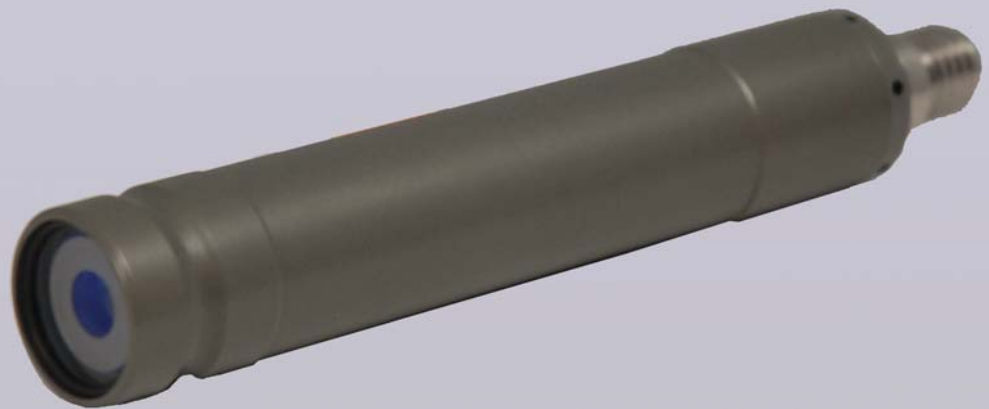


Micro Seal Laser[®]

- 6,000 Meter Depth Rated
- <5 mW Beam Output (Class IIIA)
- Small & Light
- Dual Mounting Bracket for Object Scaling or Distance Estimation
- Titanium Body



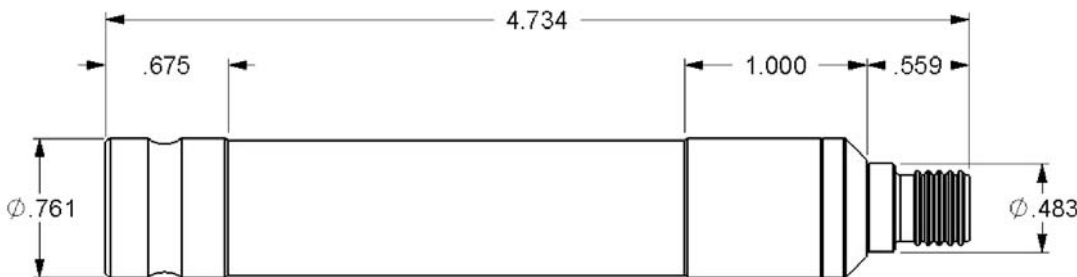
DEEPSEA
POWER & LIGHT[®]

Micro SeaLaser[®] Specifications

SPEC REV A 3/29/10

The Micro SeaLaser is an underwater scaling, rangefinding, and aiming device that utilizes a 635 nm and <5 mW semiconductor laser diode. The powerful beam output provides visibility at greater distances than less powerful lasers. Mounted in parallel, two Micro SeaLasers add scale to video or photographic images in the form of two brilliant red dots separated by a known distance. Two Micro SeaLasers mounted to produce intersecting beams can be used to determine an object's distance or to maintain constant positioning.

Micro SeaLaser [®] Specifications	
MECHANICAL	
Housing Material:	6AL-4V Titanium; other materials available
Port:	Sapphire, anti-reflective coated
Length:	12.03 cm (4.73 in.)
Diameter:	1.84 cm (0.72 in.)
Weight in Air (approx.):	75 g (2 oz.)
Weight in Water (approx.):	40 g (1 oz.)
LASER	
Type:	Semiconductor laser diode Class III-A
Beam Diameter:	1.8mm x 0.5mm
Wavelength:	(Red) 635 nm
Beam Divergence:	0.09 mRadians x 0.19 mRadians
Beam Power:	<5mW
ENVIRONMENTAL	
Depth:	6,000 meters (20,000 feet)
ELECTRICAL	
Voltage:	7-30 VDC
Connector:	Impulse Sub-Miniature Connector IE55 (titanium), 2-pin
Current:	47 mA
Pin-out:	1 = Ground 2 = Power
ACCESSORY	
Dual Micro SeaLaser Mount	



Specifications subject to change without notice.

Connector



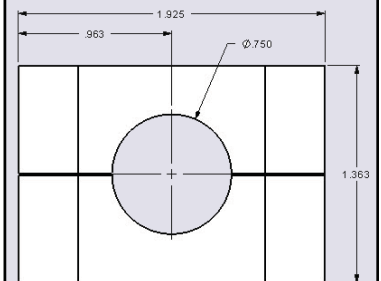
2 #20

1 = Neg
2 = Pos

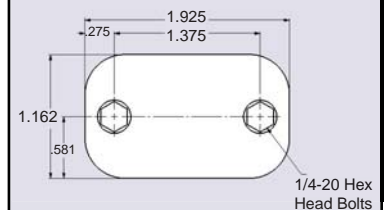
IE55W-102-BCR

Mount

Front



Top



(Mount Included)

DSPL ENG 718-003,09



DEEPSEA
Power & Light[®]

4033 Ruffin Road
San Diego, CA 92123
ph: (858) 576-1261

www.deepsea.com
info@deepsea.com
fax: (858)576-0219