



## Wide-i SeaCam®

The Wide-i SeaCam features a flat port with 125° HFOV in water. Coming standard with a titanium housing and robust borosilicate glass port, the Wide-i family of cameras provides wide-angle views and situational awareness.

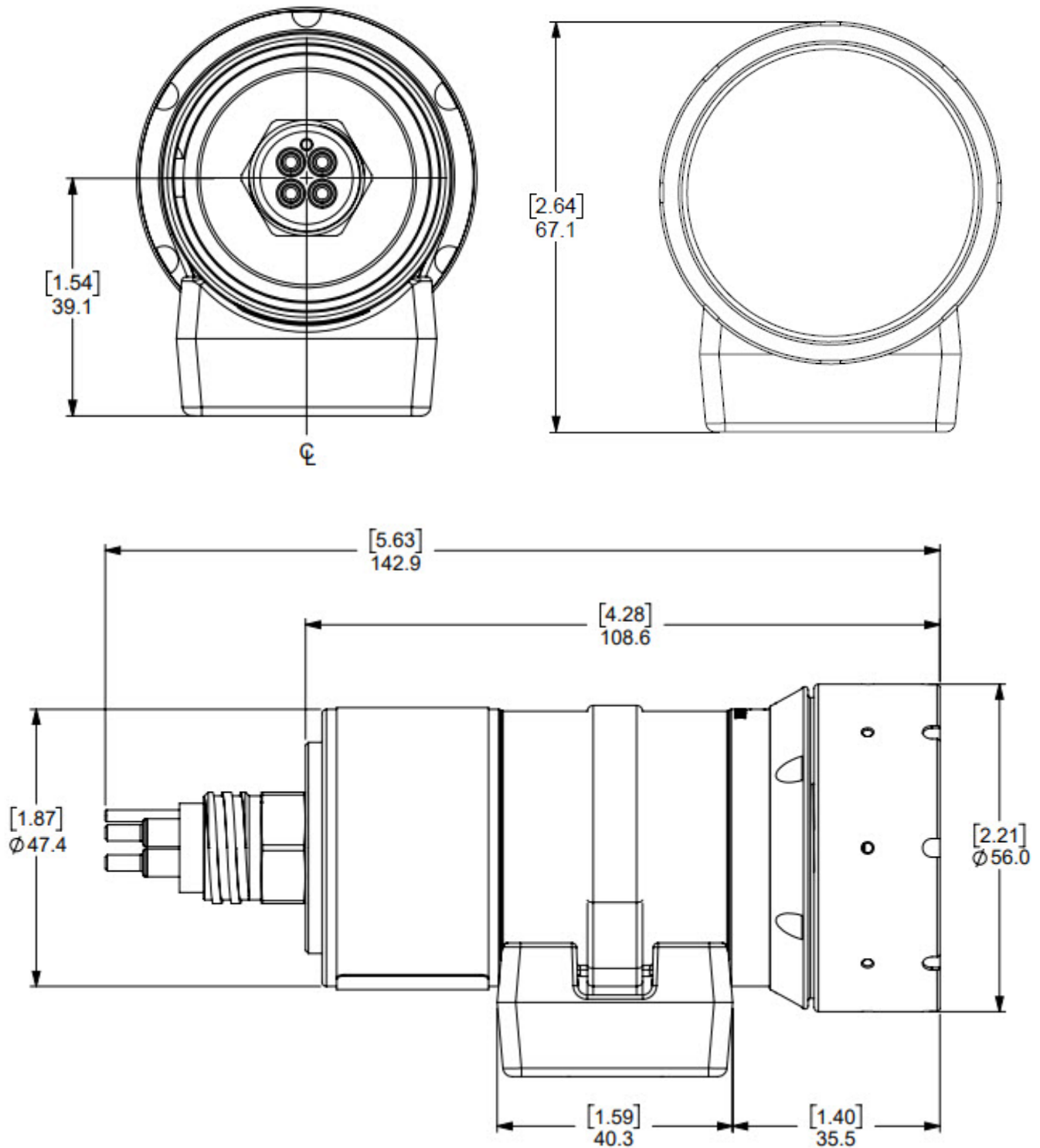
### Specifications

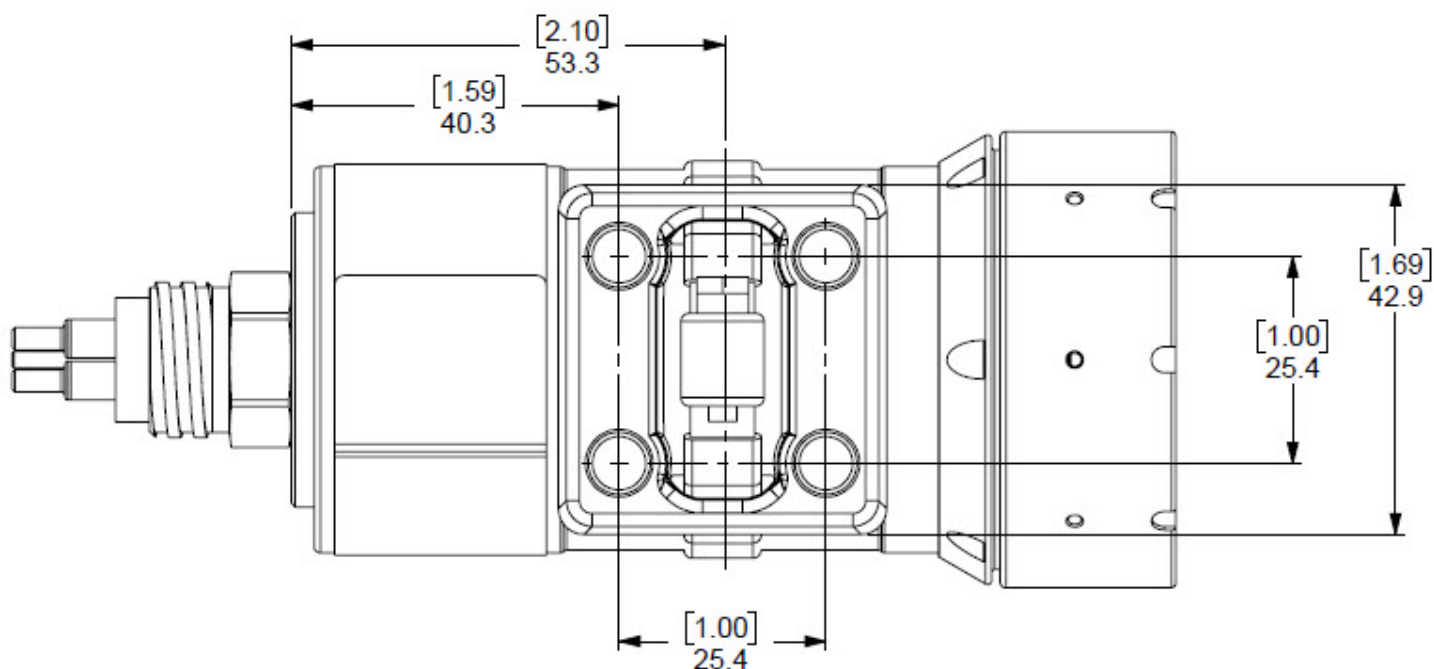
| Model              | WSC-4070  | WSC-3070     |
|--------------------|---|--------------|
| Lens               | 1.96 mm F/1.8 with IR filter                      |              |
| Field of View      | 125° Horizontal                                   |              |
| Focus              | Fixed, optimized for water                        |              |
| Image Sensor       | 1/3.2" 1.27MP CMOS                                |              |
| Sensor Resolution  | NTSC: 1280 x 486<br>PAL: 1211 x 576               |              |
| Scene Illumination | 1.7 Lux   |              |
| Signal to Noise    | 50 dB   |              |
| Video Output       | Composite, 1.0 Vp-p 75 ohm, unbalanced            |              |
| Video Format       | NTSC/PAL Color                                    | NTSC/PAL B&W |
| Power              | 10-36 VDC, 1.8W max                               |              |
| Operational Temp   | -10 °C to 40 °C [-14 °F to 104 °F]                |              |
| Storage Temp       | -30 °C to 70 °C [-22 °F to 158 °F]                |              |
| Housing            | Titanium, Glass Flat Port                         |              |
| Depth              | 6000 m  |              |
| Weight             | Air: 490 g [1.1 lbs.]<br>Water: 250 g [0.55 lbs.] |              |
| Standard Connector | SubConn MCBH 4-Pin Male Stainless Steel           |              |

### Key Features

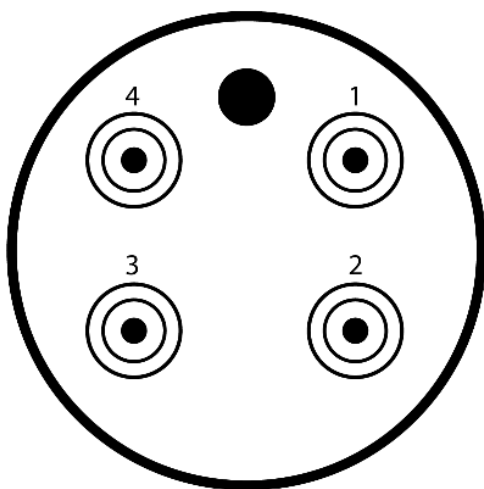


# Dimensions





## Pinout



### 04C002 PINOUT DESCRIPTION

|       |         |
|-------|---------|
| Pin 1 | DC [-]  |
| Pin 2 | DC [+]  |
| Pin 3 | ALG VID |
| Pin 4 | N/C     |