

# SEALITE® SPHERE

## *Sample True Lumens Reports*

SLS-3100.....	2
SLS-3150.....	3
SLS-3200.....	4
SLS-5100.....	5
SLS-5150.....	6
SLS-5200.....	7
SLS-6100.....	8
SLS-6150.....	9
SLS-6200.....	10
SLS-6500.....	11
SLS-6550.....	12
SLS-7200.....	13
SLS-8200.....	14



# TRUE LUMENS Report

Part Description SLS-3100  
 Serial Number  
 Operator Name  
 Date



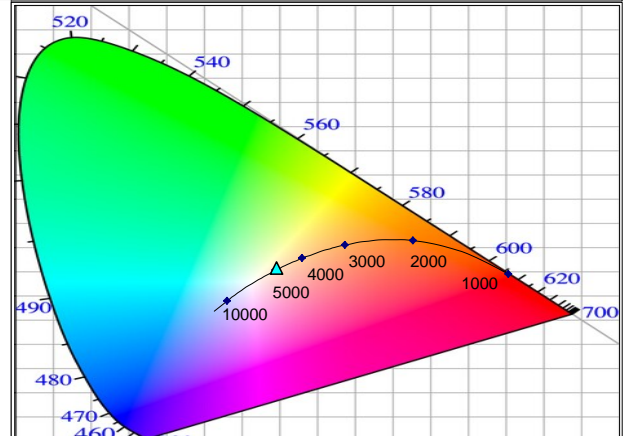
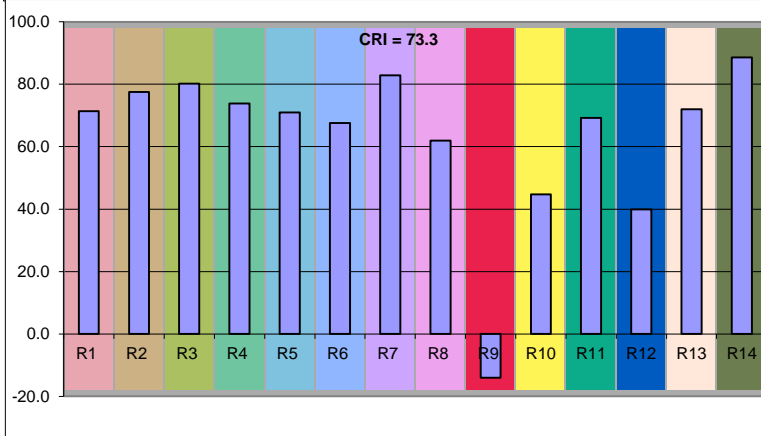
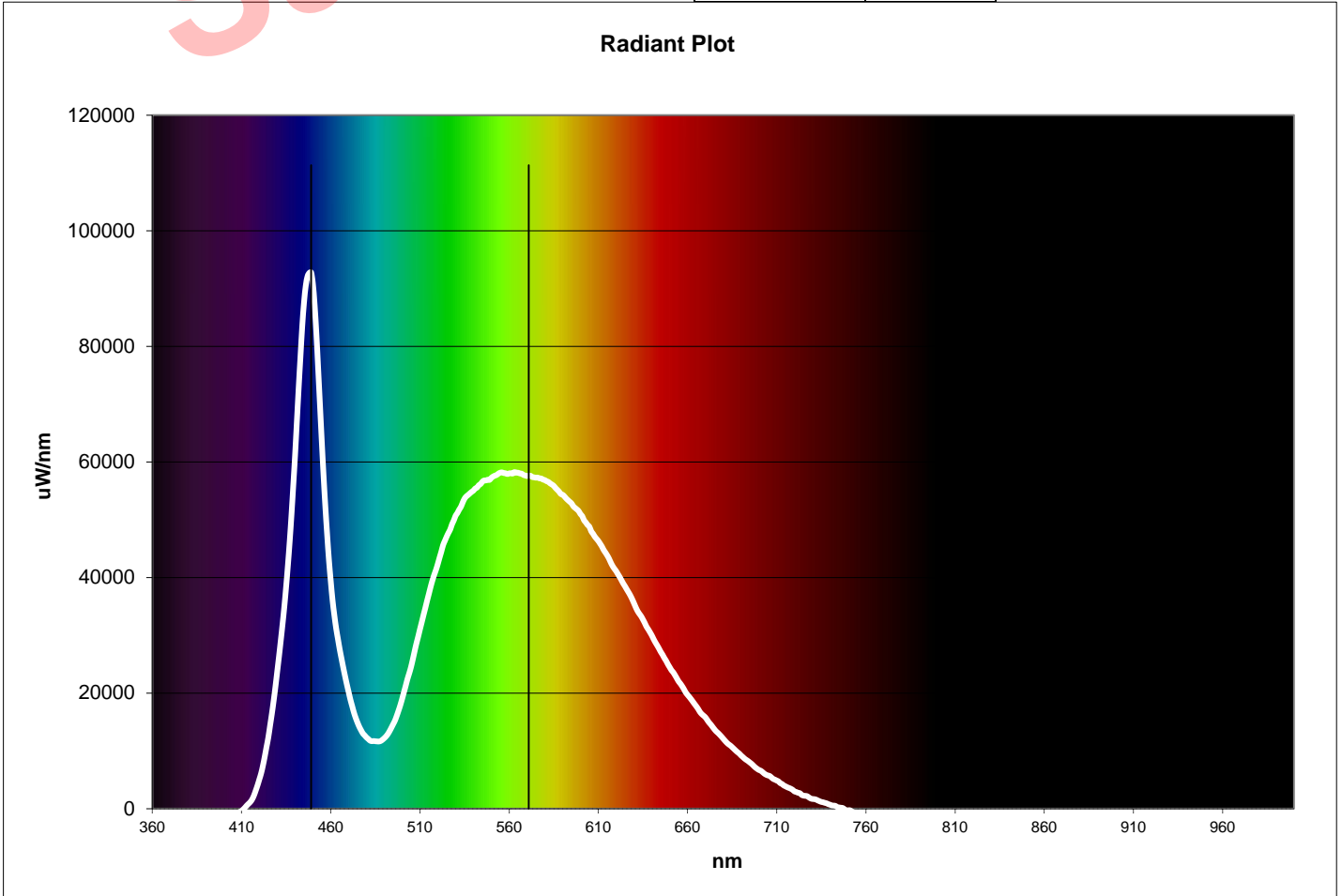
Comments: Final Lumens Measurement

Spectral Parameters	
Lumens	3499
Kelvin	4952
Radiant Power	9.313
Dominant Wavelength	571
Peak Wavelength	449
Purity	11

CIE Chromaticity	
CIE x	0.3467
CIE y	0.3561
CIE z	0.2972
u prime	0.2108
v prime	0.4871

CRI = 73.3	
R1 = 71.4	R8 = 61.9
R2 = 77.5	R9 = -14.5
R3 = 80.2	R10 = 44.7
R4 = 73.8	R11 = 69.2
R5 = 71.0	R12 = 39.9
R6 = 67.6	R13 = 72.0
R7 = 82.9	R14 = 88.6

Lumens measurement taken in air with cowl removed



# TRUE LUMENS Report

Part Description SLS-3150

Serial Number

Operator Name

Date



Comments: Final Lumens Measurement

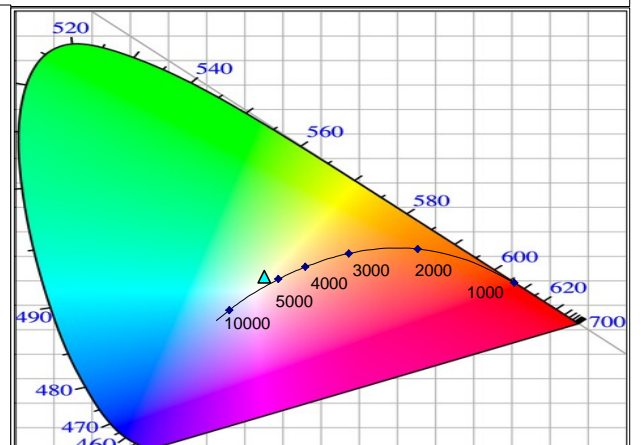
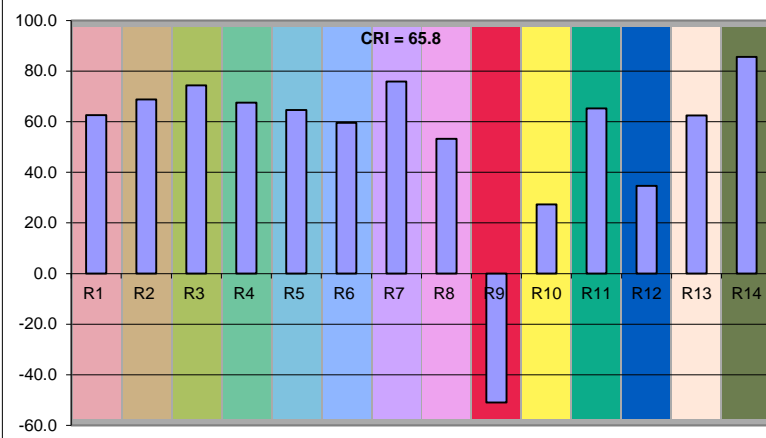
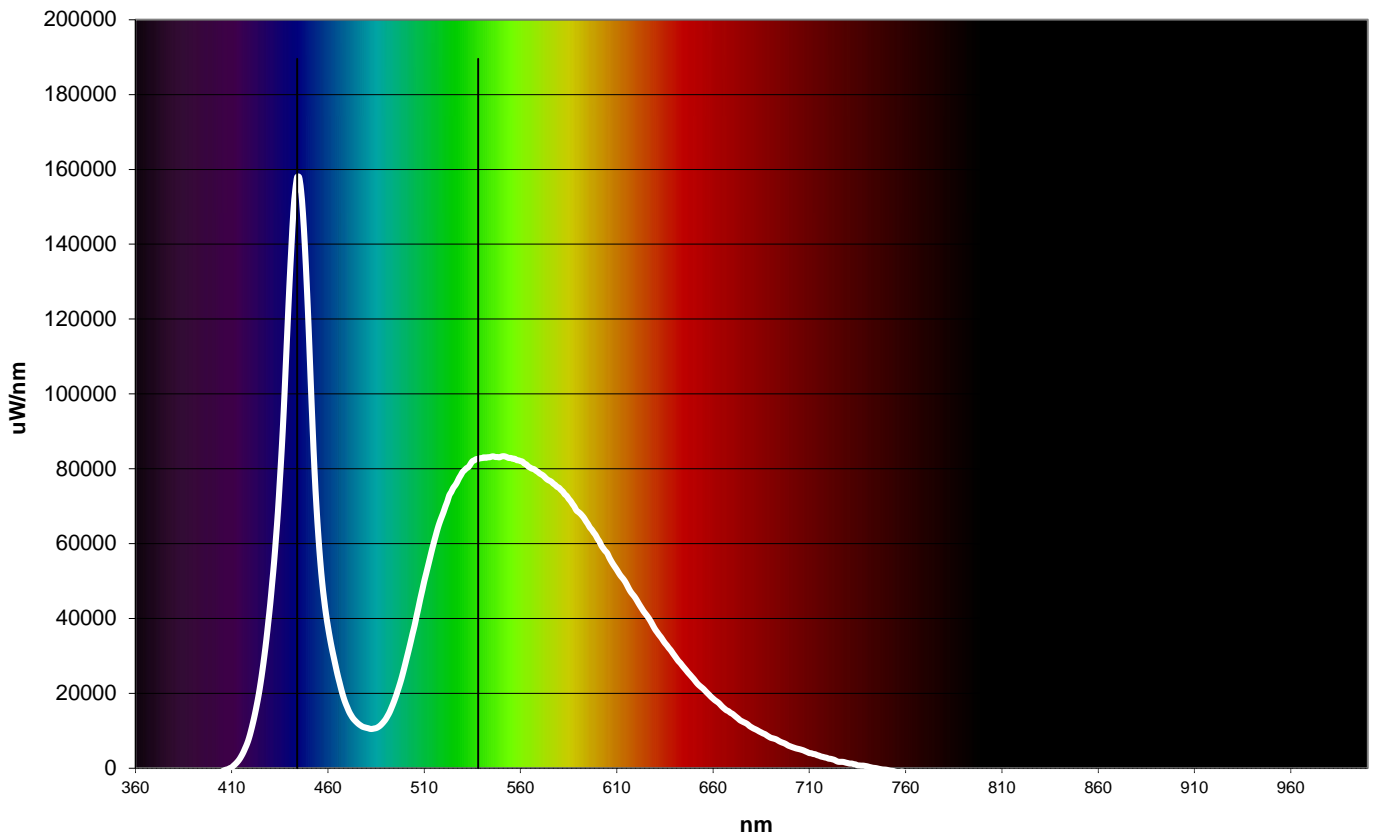
Spectral Parameters	
Lumens	4810
Kelvin	5729
Radiant Power	12.7
Dominant Wavelength	538
Peak Wavelength	444
Purity	5.4

CIE Chromaticity	
CIE x	0.3268
CIE y	0.3565
CIE z	0.3167
u prime	0.1974
v prime	0.4843

CRI = 65.8	
R1 = 62.6	R8 = 53.2
R2 = 68.8	R9 = -51.9
R3 = 74.3	R10 = 27.3
R4 = 67.5	R11 = 65.3
R5 = 64.6	R12 = 34.7
R6 = 59.5	R13 = 62.5
R7 = 75.9	R14 = 85.6

Lumens measurement taken in air without crash guard

Radiant Plot



# TRUE LUMENS Report

Part Description SLS-3200  
 Serial Number  
 Operator Name  
 Date



Comments: Final Lumens Measurement

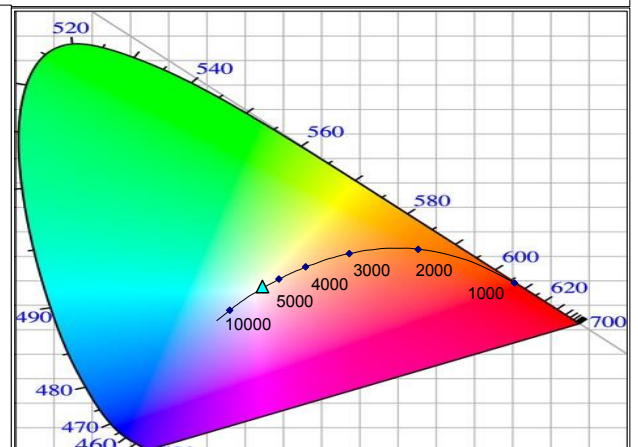
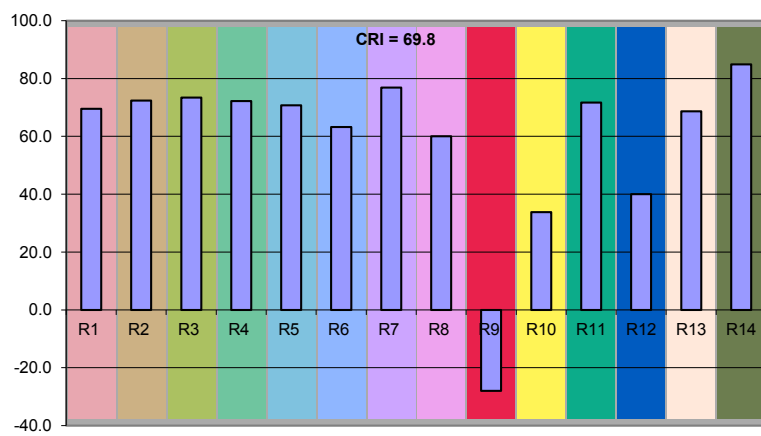
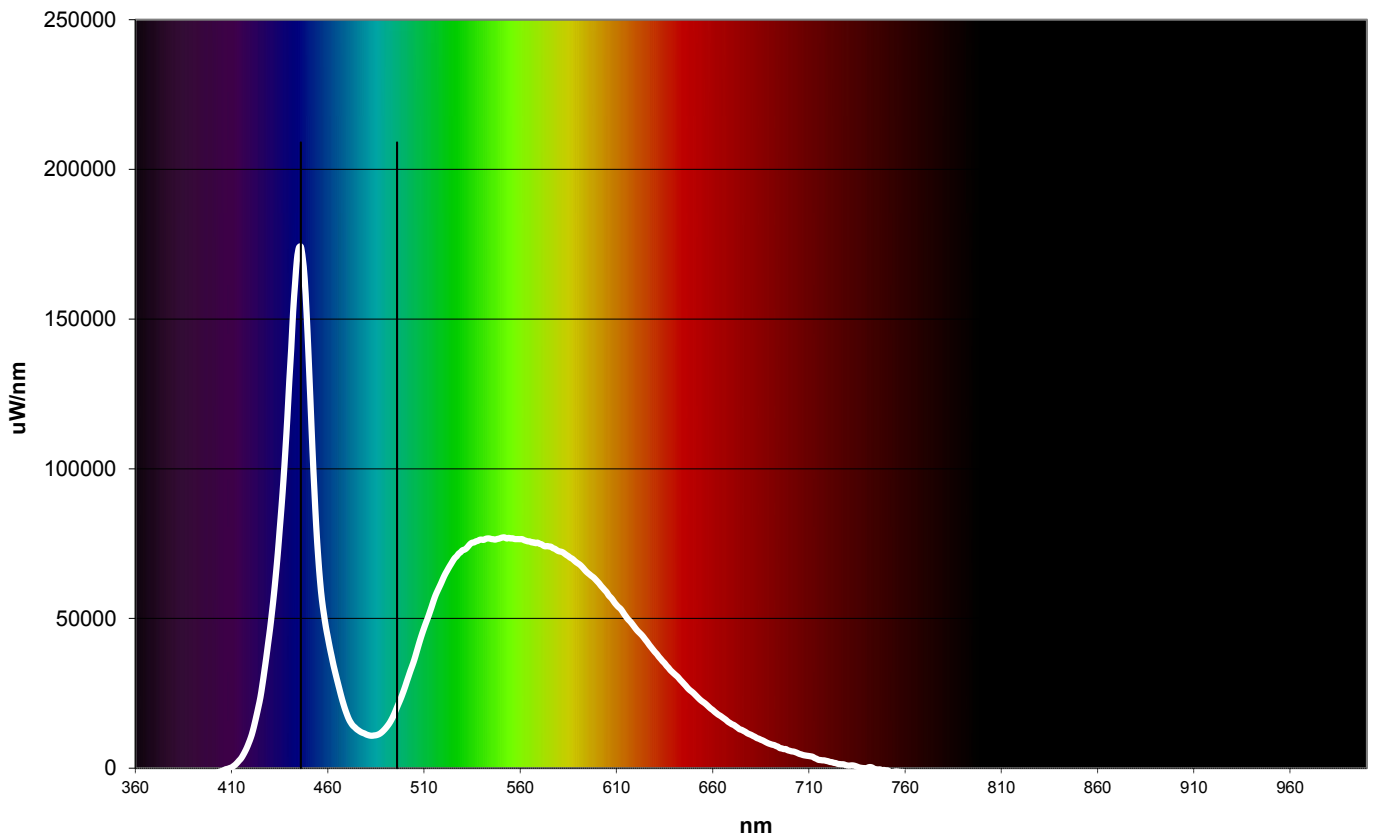
Spectral Parameters	
Lumens	4602
Kelvin	5901
Radiant Power	12.58
Dominant Wavelength	496
Peak Wavelength	446
Purity	3

CIE Chromaticity	
CIE x	0.3237
CIE y	0.3367
CIE z	0.3395
u prime	0.2025
v prime	0.4740

CRI = 69.8	
R1 = 69.5	R8 = 60.0
R2 = 72.4	R9 = -28.5
R3 = 73.4	R10 = 33.8
R4 = 72.2	R11 = 71.7
R5 = 70.7	R12 = 40.0
R6 = 63.2	R13 = 68.7
R7 = 76.9	R14 = 84.9

Lumens measurement taken in air without crash guard

Radiant Plot



# TRUE LUMENS Report

Part Description SLS-5100

Serial Number

Operator Name

Date



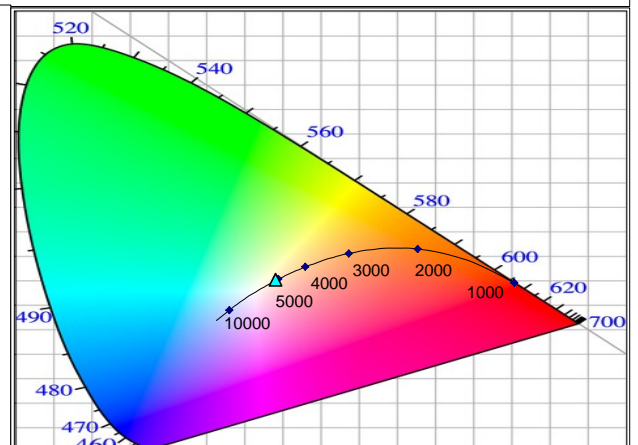
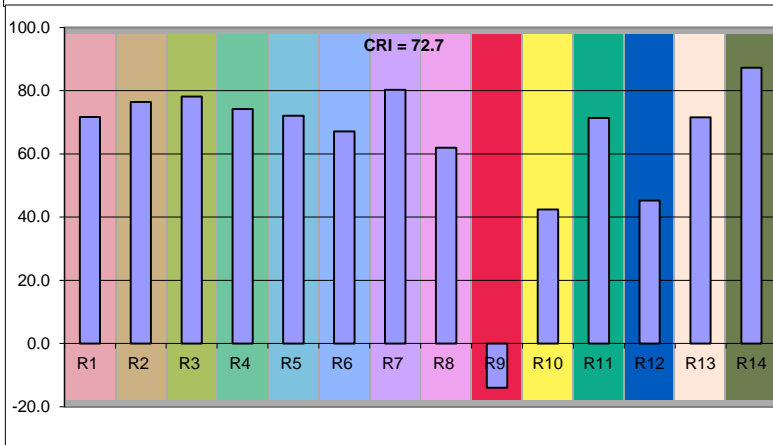
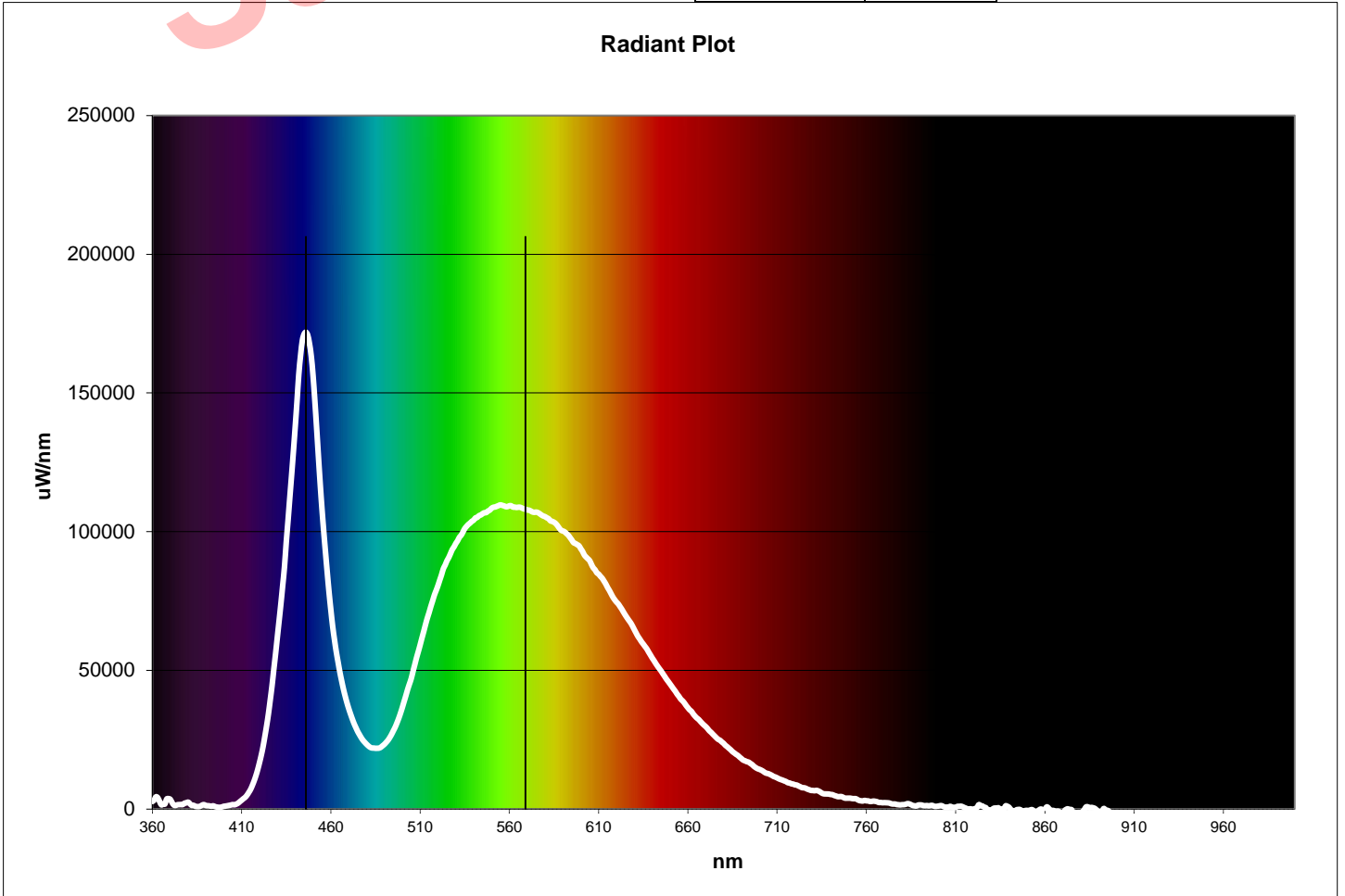
Comments: Final Lumens Measurement

Spectral Parameters	
Lumens	6550
Kelvin	5144
Radiant Power	20.29
Dominant Wavelength	569
Peak Wavelength	446
Purity	7.6

CIE Chromaticity	
CIE x	0.3412
CIE y	0.3501
CIE z	0.3087
u prime	0.2094
v prime	0.4834

CRI = 72.7	
R1 = 71.7	R8 = 62.0
R2 = 76.4	R9 = -14.7
R3 = 78.1	R10 = 42.4
R4 = 74.2	R11 = 71.4
R5 = 72.1	R12 = 45.2
R6 = 67.1	R13 = 71.6
R7 = 80.3	R14 = 87.3

Lumens measurement taken in air with cowl removed



# TRUE LUMENS Report

Part Description SLS-5150  
 Serial Number  
 Operator Name  
 Date



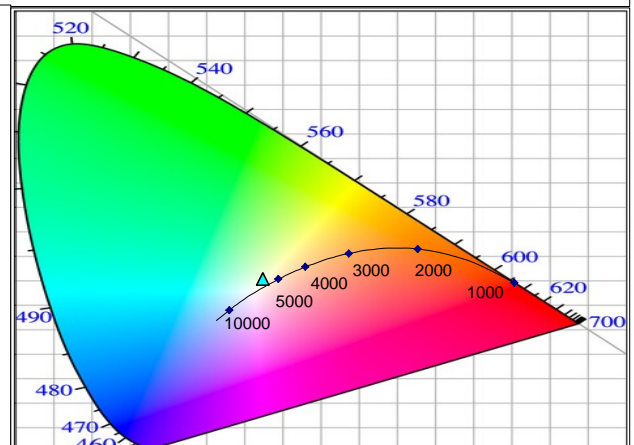
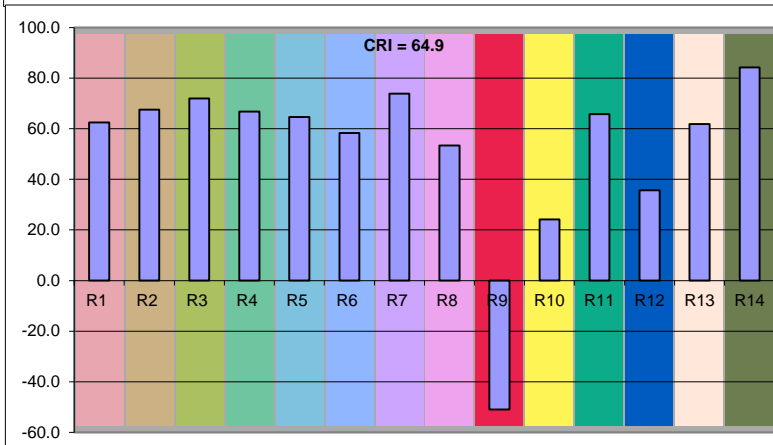
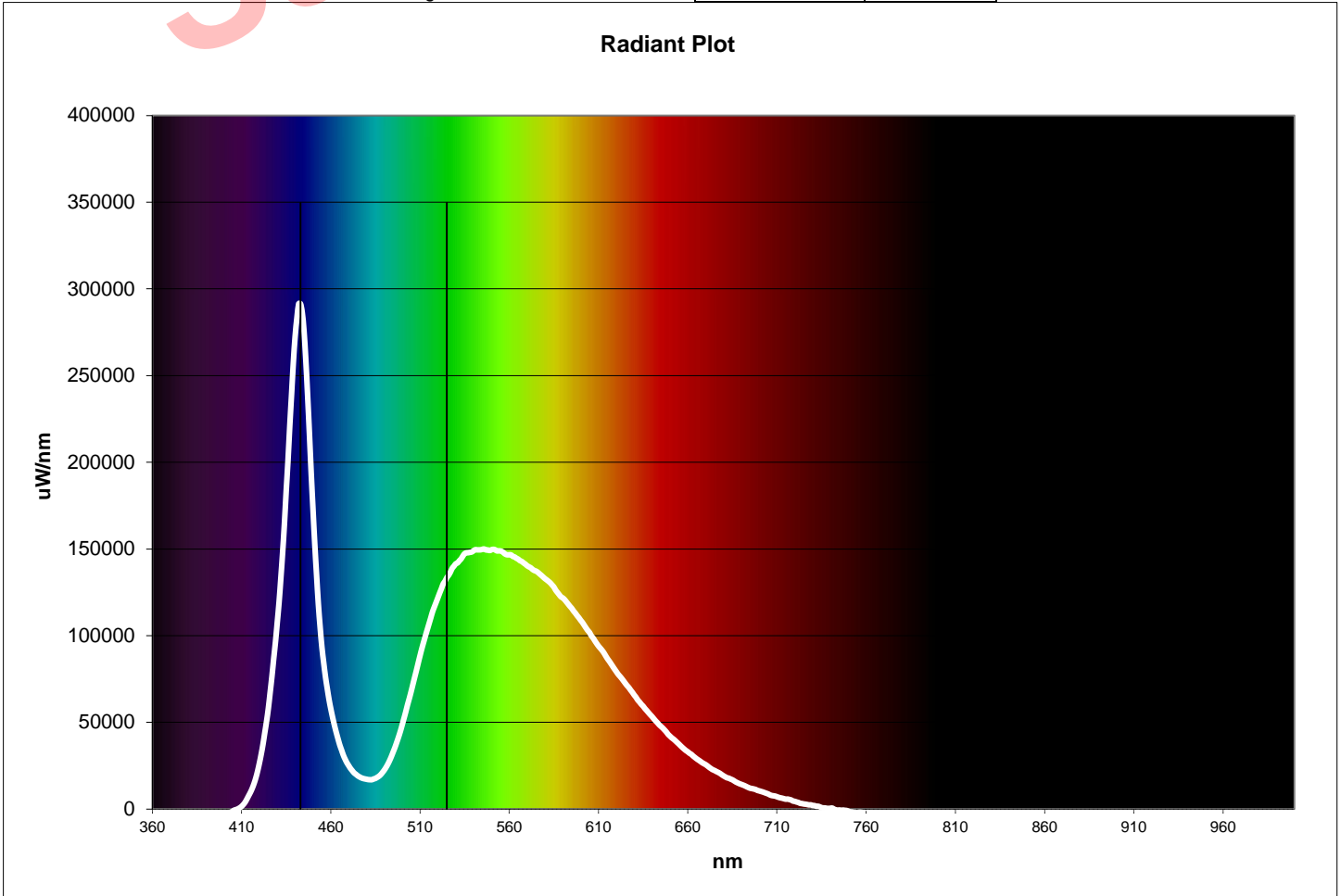
Comments: Final Lumens Measurement

Spectral Parameters	
Lumens	8574
Kelvin	5820
Radiant Power	22.71
Dominant Wavelength	525
Peak Wavelength	443
Purity	3.8

CIE Chromaticity	
CIE x	0.3248
CIE y	0.3519
CIE z	0.3233
u prime	0.1976
v prime	0.4818

CRI = 64.9	
R1 = 62.5	R8 = 53.3
R2 = 67.5	R9 = -51.6
R3 = 72.0	R10 = 24.2
R4 = 66.8	R11 = 65.7
R5 = 64.6	R12 = 35.7
R6 = 58.3	R13 = 61.8
R7 = 73.8	R14 = 84.2

Lumens measurement taken in air without crash guard



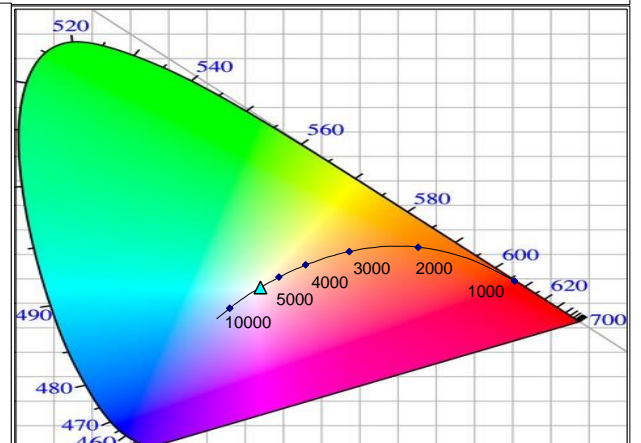
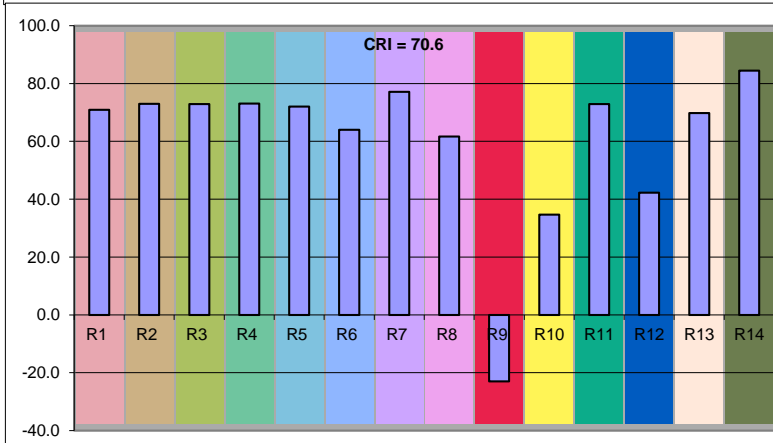
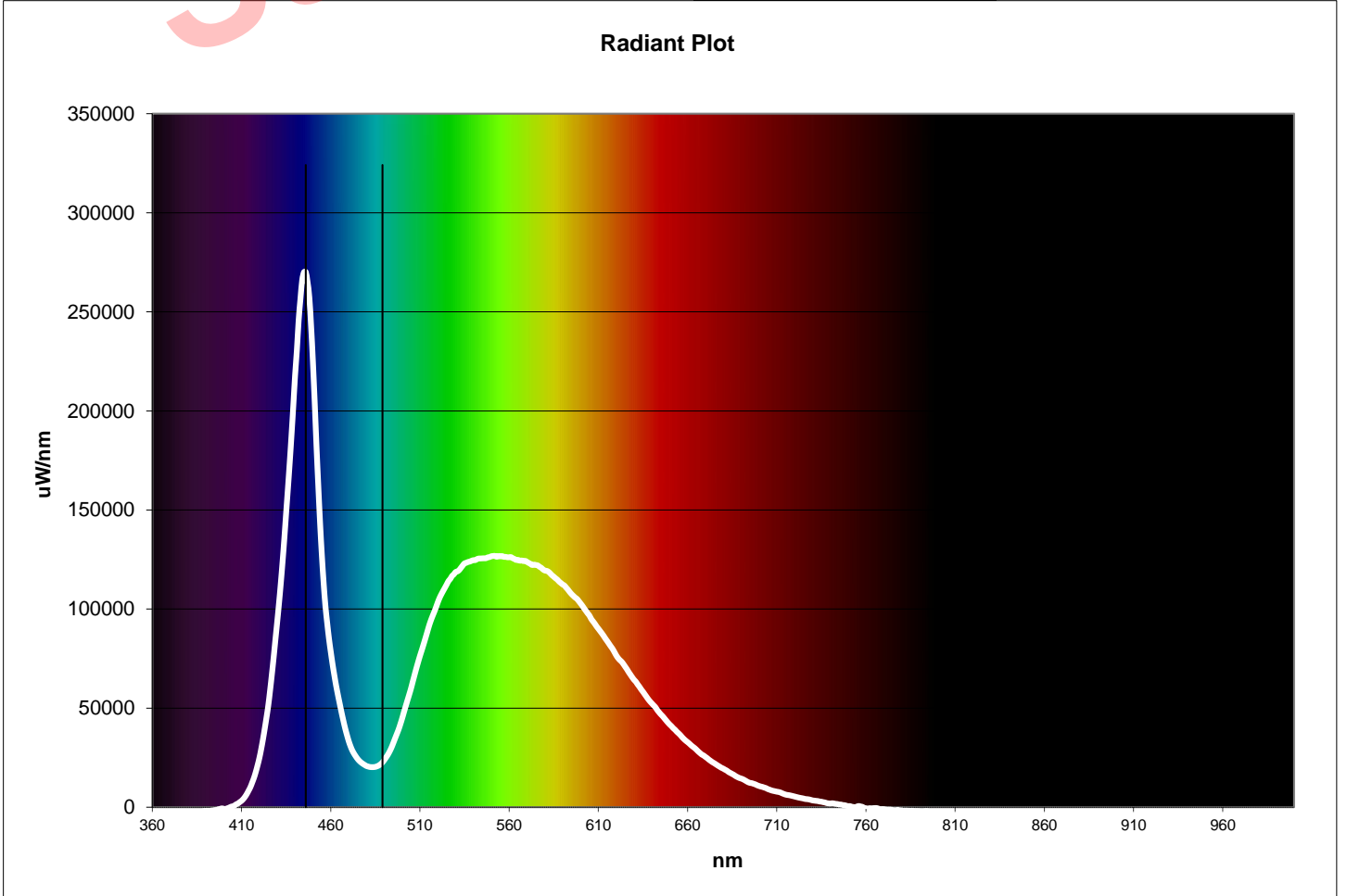
# TRUE LUMENS Report

Part Description SLS-5200  
 Serial Number  
 Operator Name  
 Date



Comments: Final Lumens Measurement

Spectral Parameters		CIE Chromaticity		CRI = 70.6	
Lumens	7576	CIE x	0.3211	R1 = 70.9	R8 = 61.7
Kelvin	6051	CIE y	0.3308	R2 = 73.0	R9 = -23.0
Radiant Power	22.32	CIE z	0.3481	R3 = 72.9	R10 = 34.7
Dominant Wavelength	489	u prime	0.2030	R4 = 73.1	R11 = 72.9
Peak Wavelength	446	v prime	0.4705	R5 = 72.0	R12 = 42.3
Purity	4.2			R6 = 64.0	R13 = 69.8
Lumens measurement taken in air without crash guard				R7 = 77.1	R14 = 84.5



# TRUE LUMENS Report

Part Description SLS-6100

Serial Number

Operator Name

Date



Comments: Final Lumens Measurement

Spectral Parameters	
Lumens	7114
Kelvin	5269
Radiant Power	20.42
Dominant Wavelength	573
Peak Wavelength	447
Purity	3.4

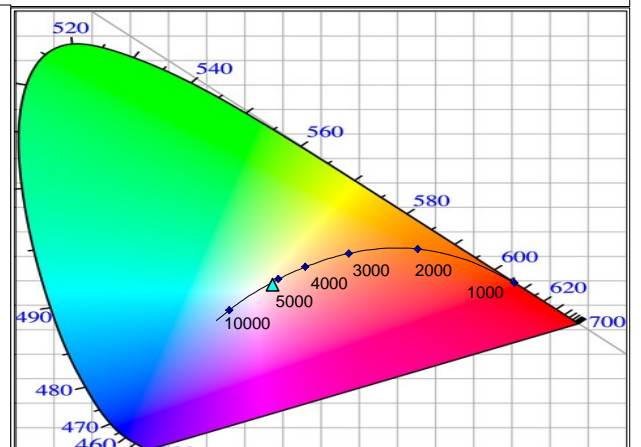
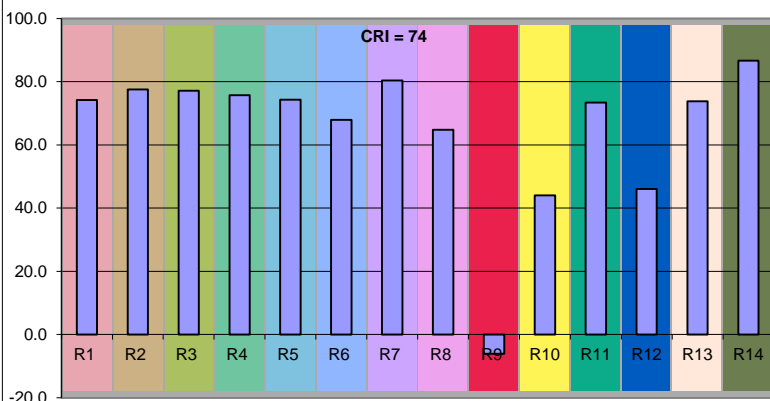
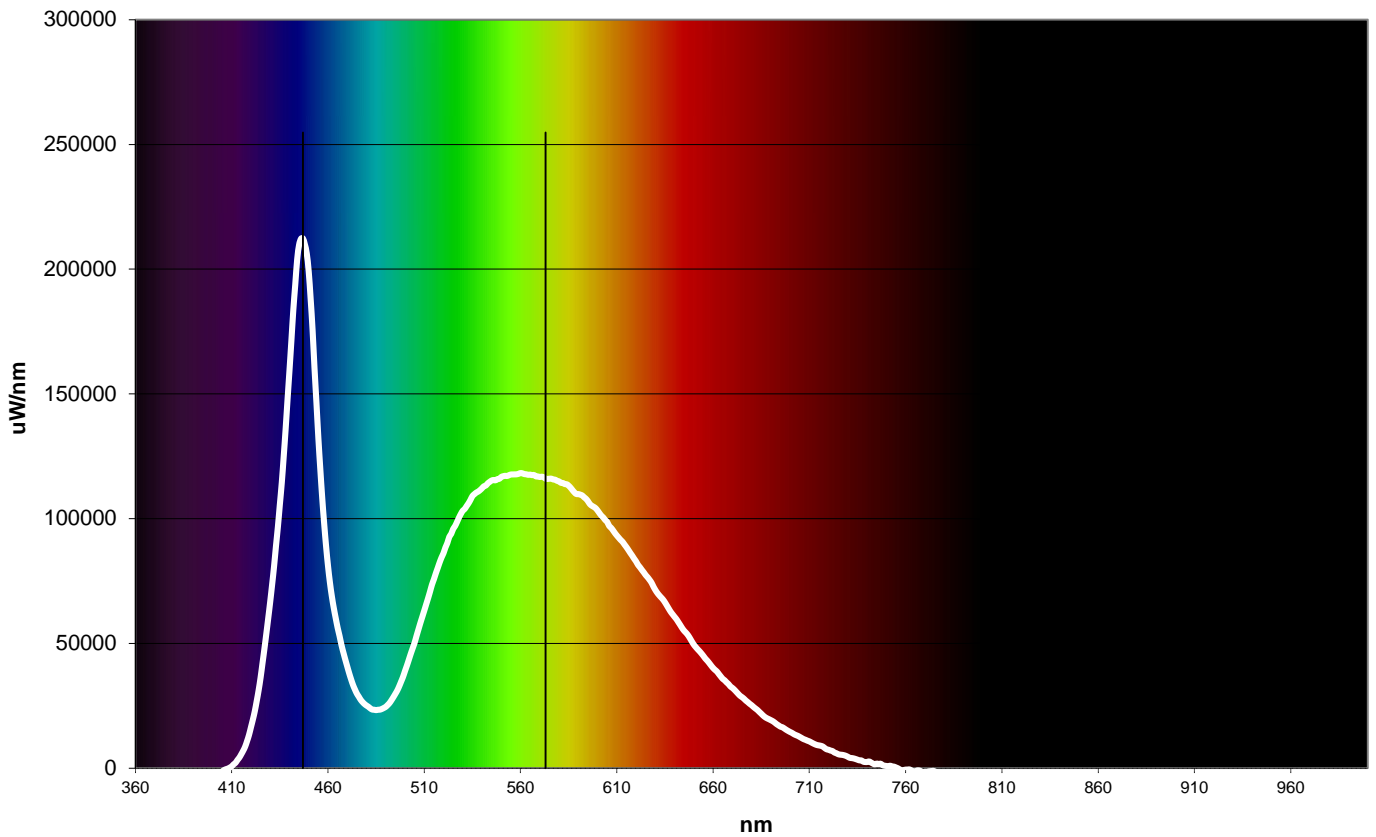
CIE Chromaticity	
CIE x	0.3376
CIE y	0.3398
CIE z	0.3225
u prime	0.2109
v prime	0.4777

CRI = 74	
R1 = 74.2	R8 = 64.8
R2 = 77.5	R9 = -6.1
R3 = 77.1	R10 = 44.0
R4 = 75.7	R11 = 73.4
R5 = 74.3	R12 = 46.1
R6 = 67.9	R13 = 73.8
R7 = 80.4	R14 = 86.7

Input Power	
Volts (AC)	120
Amps	1.4
Frequency	60
Power	168

Lumens measurement taken in air with cowl removed

Radiant Plot



# TRUE LUMENS Report

Part Description SLS-6150  
 Serial Number  
 Operator Name  
 Date



Comments: Final Lumens Measurement

Spectral Parameters	
Lumens	11114
Kelvin	5873
Radiant Power	29.77
Dominant Wavelength	516
Peak Wavelength	442
Purity	3.3

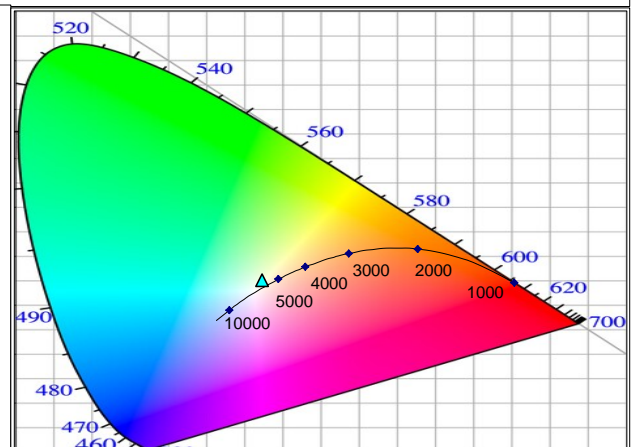
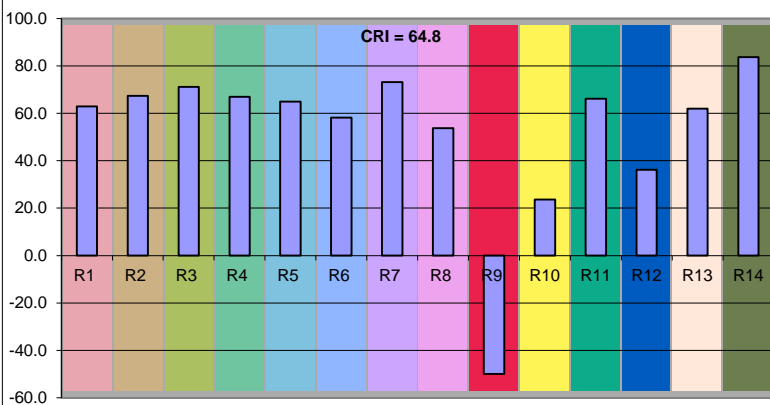
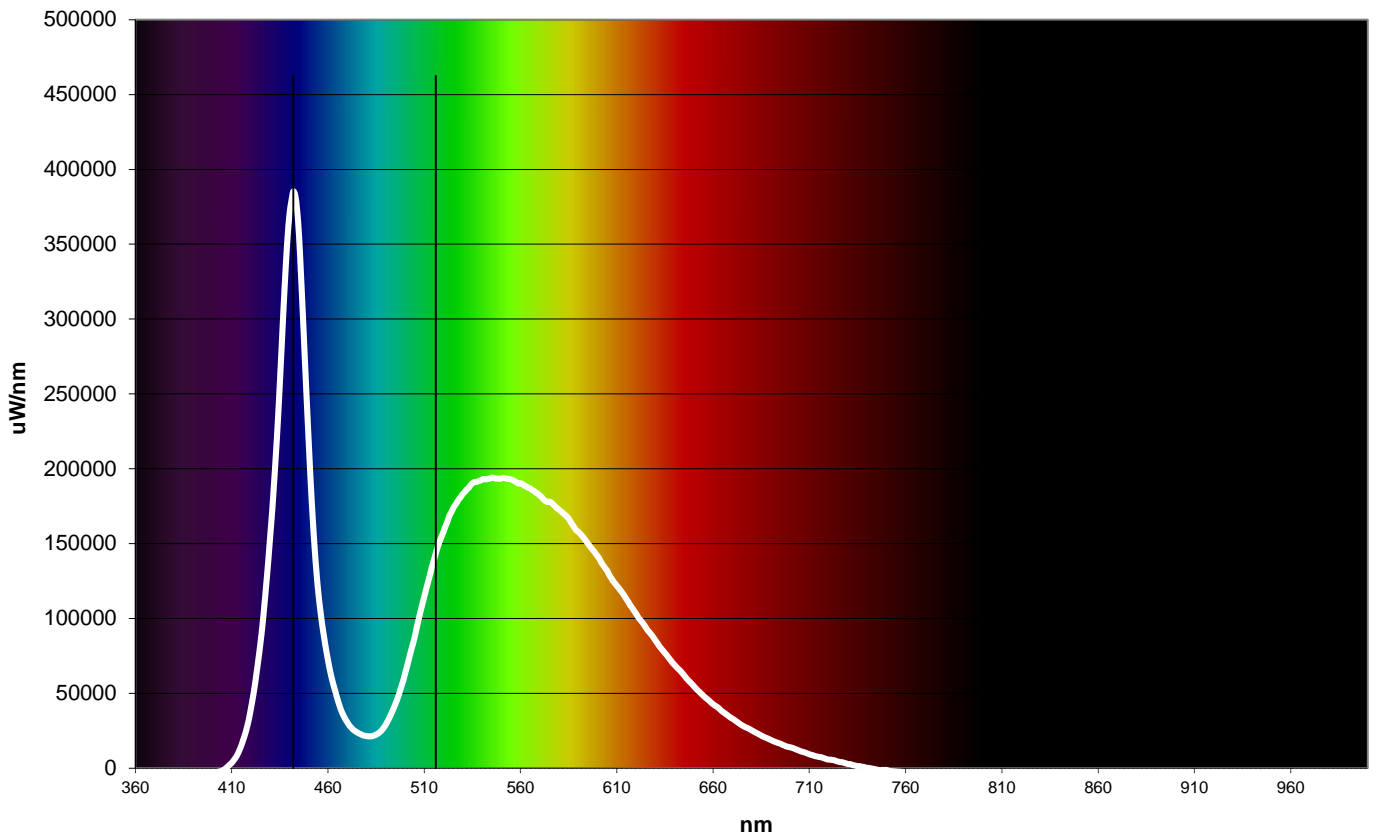
CIE Chromaticity	
CIE x	0.3237
CIE y	0.3491
CIE z	0.3272
u prime	0.1979
v prime	0.4803

CRI = 64.8	
R1 = 62.9	R8 = 53.7
R2 = 67.3	R9 = -50.2
R3 = 71.2	R10 = 23.6
R4 = 66.9	R11 = 66.2
R5 = 64.9	R12 = 36.2
R6 = 58.2	R13 = 62.0
R7 = 73.2	R14 = 83.7

Input Power	
Volts (AC)	120
Amps	1.4
Frequency	60
Power	168

Lumens measurement taken in air with cowl removed

Radiant Plot



# TRUE LUMENS Report

Part Description SLS-6200  
 Serial Number  
 Operator Name  
 Date



Comments: Final Lumens Measurement

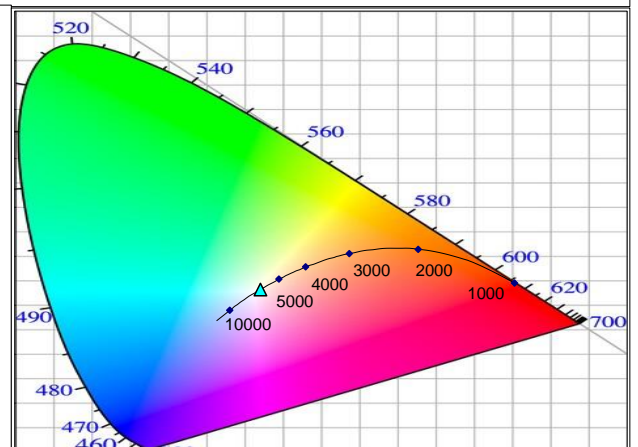
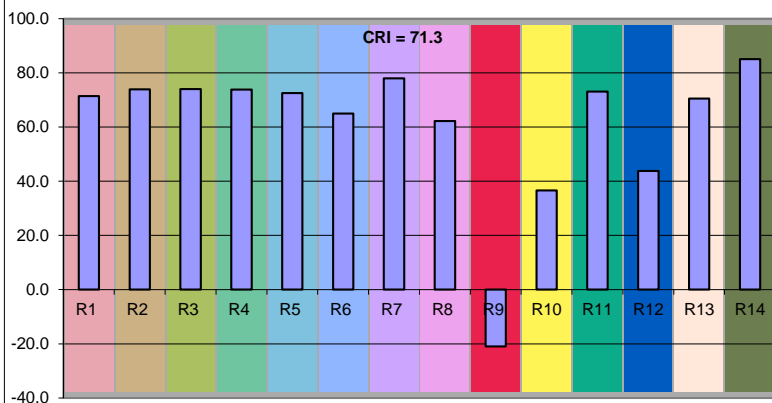
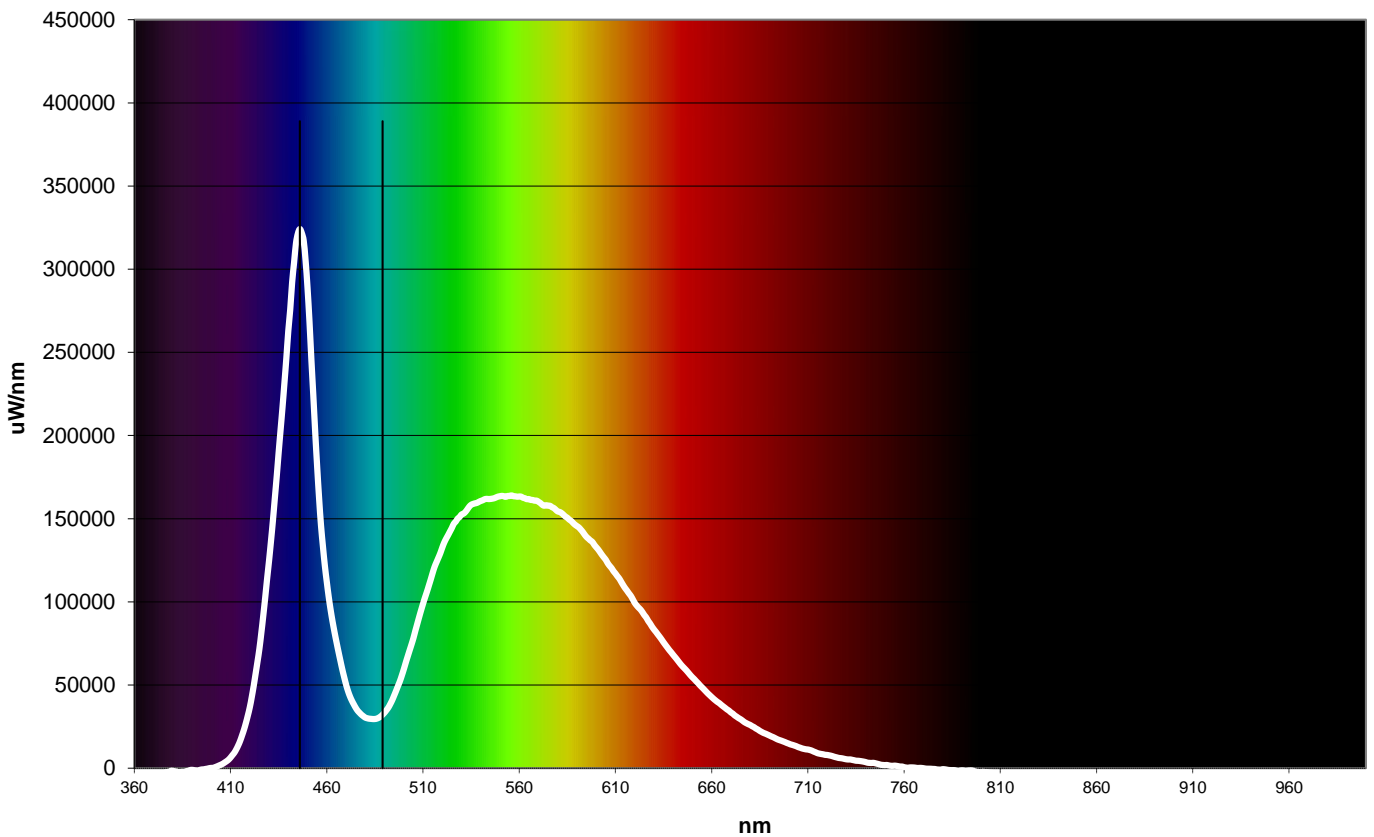
Spectral Parameters	
Lumens	9803
Kelvin	6063
Radiant Power	29.56
Dominant Wavelength	489
Peak Wavelength	446
Purity	4.3

CIE Chromaticity	
CIE x	0.3208
CIE y	0.3306
CIE z	0.3485
u prime	0.2029
v prime	0.4704

CRI = 71.3	
R1 = 71.4	R8 = 62.2
R2 = 73.9	R9 = -21.4
R3 = 74.0	R10 = 36.6
R4 = 73.8	R11 = 73.1
R5 = 72.5	R12 = 43.8
R6 = 65.0	R13 = 70.5
R7 = 78.0	R14 = 85.1

Lumens measurement taken in air with cowl removed

Radiant Plot



# TRUE LUMENS Report

Part Description SLS-6500  
 Serial Number  
 Operator Name  
 Date



Comments: Final Lumens Measurement

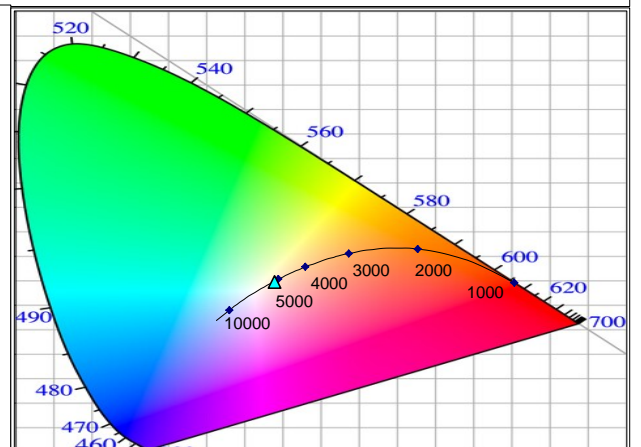
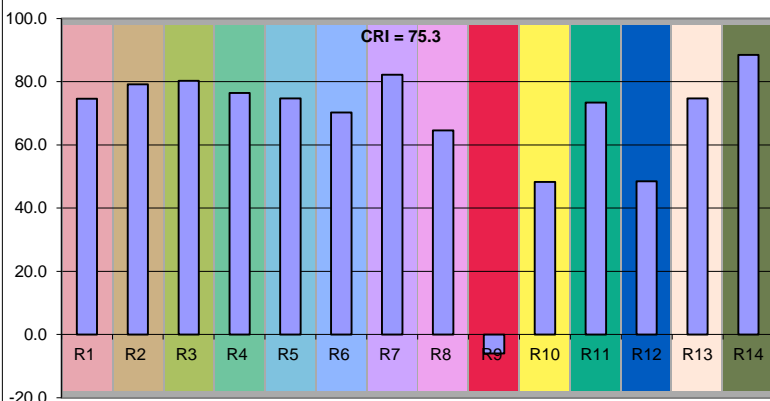
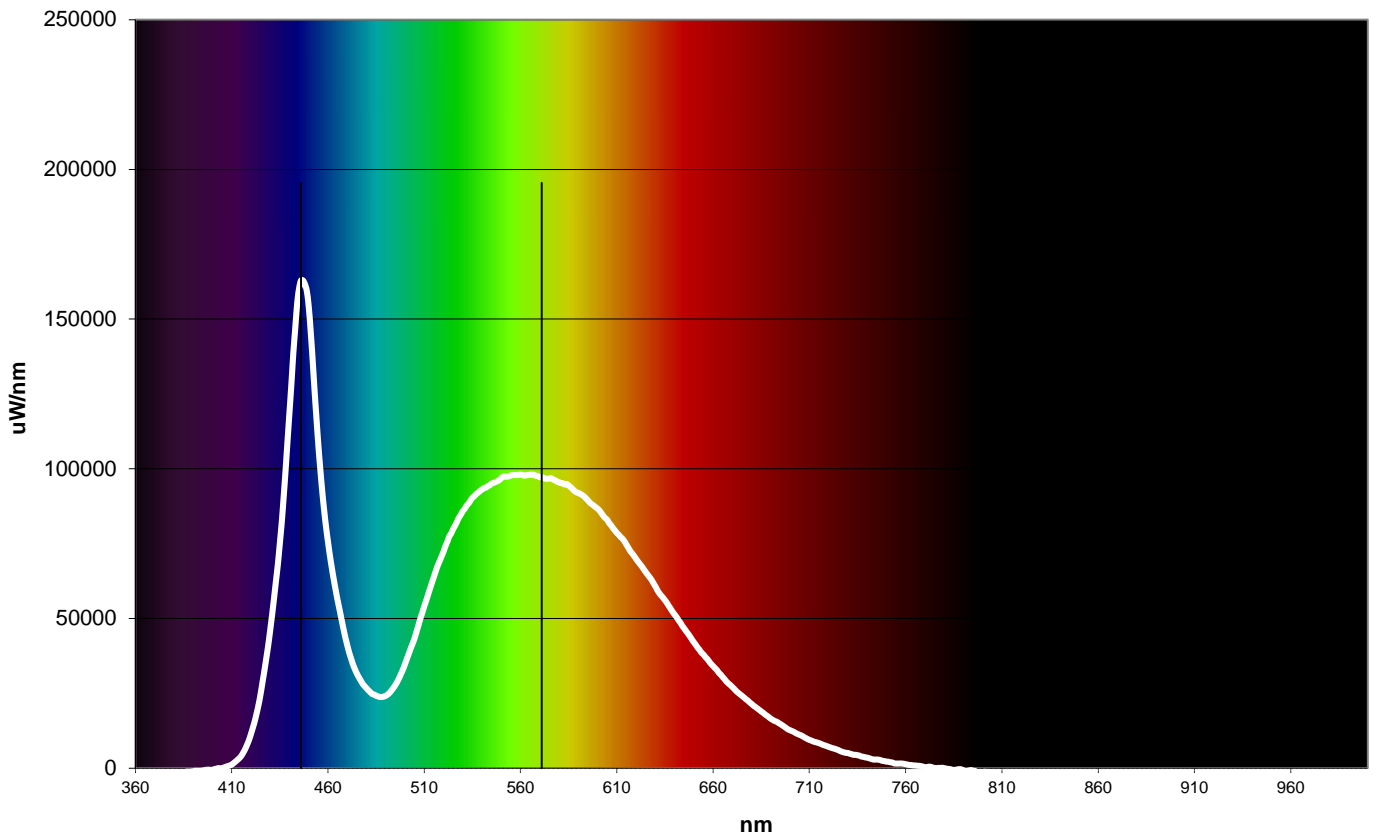
Spectral Parameters	
Lumens	5955
Kelvin	5178
Radiant Power	17.86
Dominant Wavelength	571
Peak Wavelength	446
Purity	5.9

CIE Chromaticity	
CIE x	0.3401
CIE y	0.3456
CIE z	0.3144
u prime	0.2104
v prime	0.4809

CRI = 75.3	
R1 = 74.6	R8 = 64.6
R2 = 79.2	R9 = -6.0
R3 = 80.3	R10 = 48.3
R4 = 76.4	R11 = 73.4
R5 = 74.7	R12 = 48.5
R6 = 70.3	R13 = 74.7
R7 = 82.2	R14 = 88.5

Lumens measurement taken in air with cowl removed

Radiant Plot



# TRUE LUMENS Report

Part Description SLS-6550  
 Serial Number  
 Operator Name  
 Date



Comments: Final Lumens

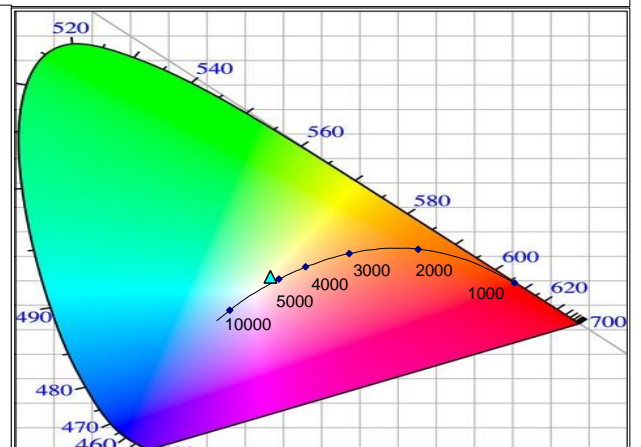
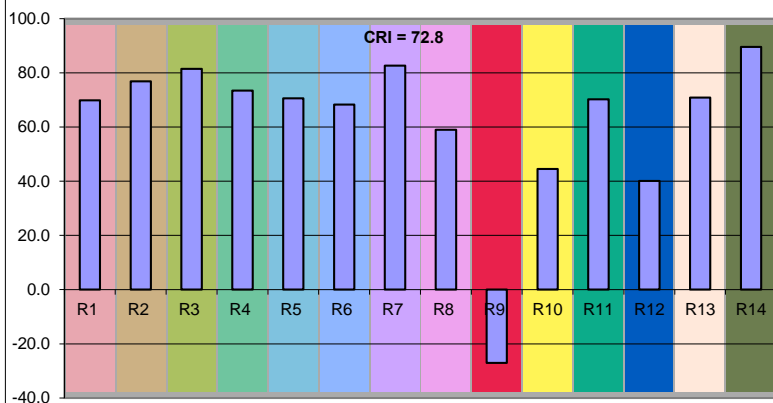
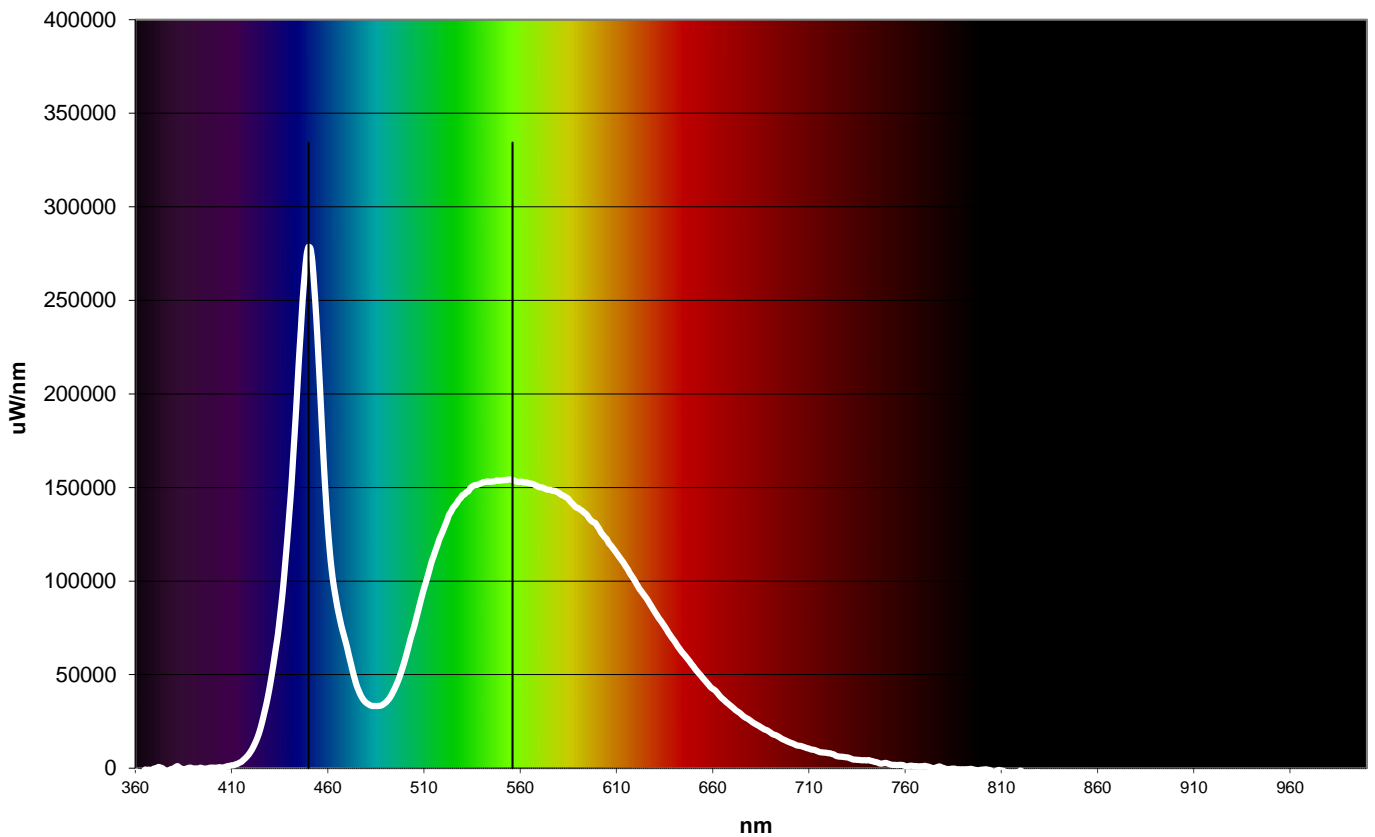
Spectral Parameters	
Lumens	9368
Kelvin	5441
Radiant Power	27.16
Dominant Wavelength	556
Peak Wavelength	450
Purity	7.4

CIE Chromaticity	
CIE x	0.3340
CIE y	0.3565
CIE z	0.3095
u prime	0.2021
v prime	0.4854

CRI = 72.8	
R1 = 69.9	R8 = 59.0
R2 = 76.9	R9 = -27.9
R3 = 81.5	R10 = 44.5
R4 = 73.5	R11 = 70.2
R5 = 70.6	R12 = 40.1
R6 = 68.3	R13 = 70.9
R7 = 82.7	R14 = 89.6

Lumens measurement taken in air with cowl removed

Radiant Plot



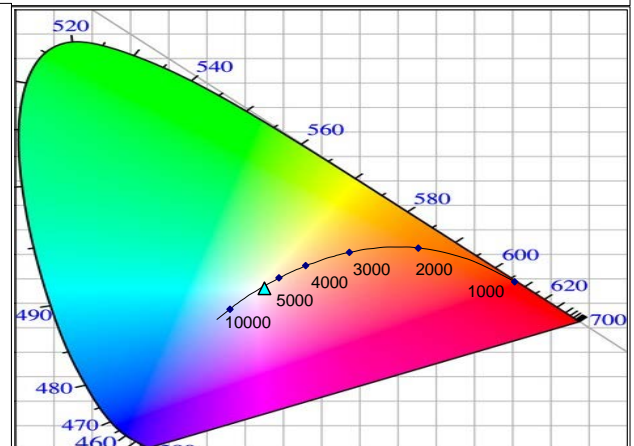
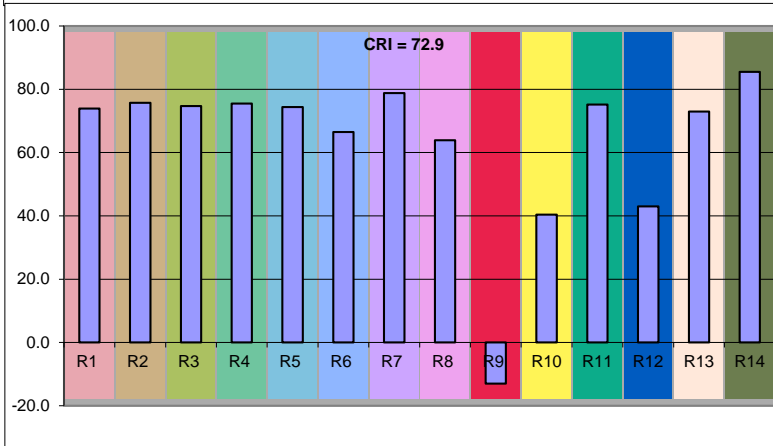
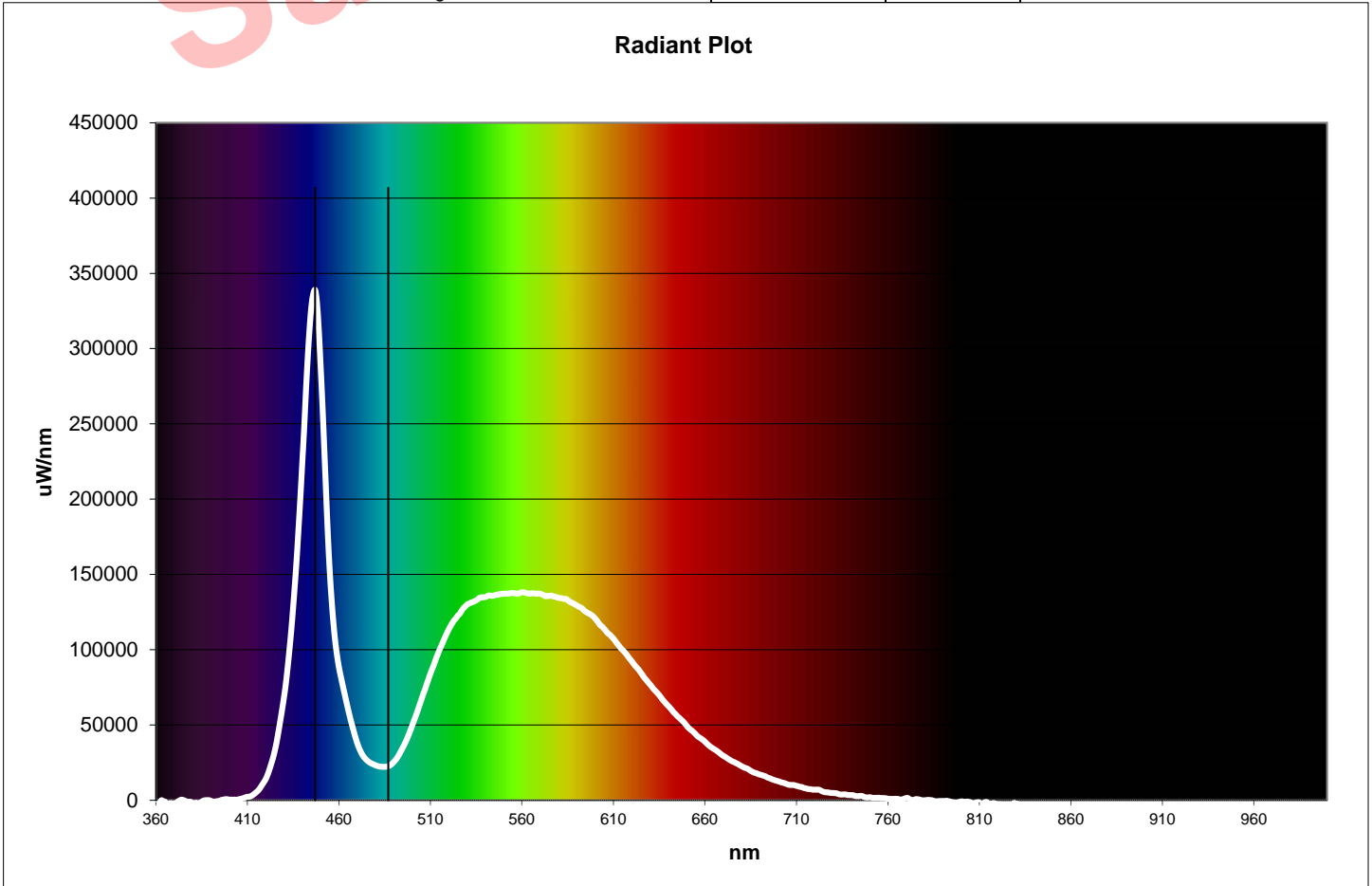
# TRUE LUMENS Report

Part Description SLS-7200  
 Serial Number  
 Operator Name  
 Date



Comments: Final Lumen Test

Spectral Parameters		CIE Chromaticity		CRI = 72.9	
Lumens	8453 Lm	CIE x	0.3261	R1 = 73.9	R8 = 63.9
CCT	5799 K	CIE y	0.3307	R2 = 75.7	R9 = -13.8
Radiant Power	25.66 W	CIE z	0.3432	R3 = 74.7	R10 = 40.4
Dominant Wavelength	487 nm	u prime	0.2065	R4 = 75.5	R11 = 75.2
Peak Wavelength	447 nm	v prime	0.4712	R5 = 74.4	R12 = 43.0
Purity	2.5			R6 = 66.5	R13 = 73.0
Lumens measurement taken in air without crash guard				R7 = 78.8	R14 = 85.5



# TRUE LUMENS Report

Part Description SLS-8200  
 Serial Number  
 Operator Name  
 Date



Comments: Final Lumens Measurement

Spectral Parameters		CIE Chromaticity		CRI = 70	
Lumens	9411 Lm	CIE x	0.3258	R1 = 70.2	R8 = 60.4
CCT	5799 K	CIE y	0.3380	R2 = 72.3	R9 = -25.4
Radiant Power	29.21 W	CIE z	0.3362	R3 = 73.3	R10 = 34.2
Dominant Wavelength	500 nm	u prime	0.2035	R4 = 72.3	R11 = 73.2
Peak Wavelength	444 nm	v prime	0.4750	R5 = 71.5	R12 = 43.7
Purity	2.3			R6 = 63.9	R13 = 68.9
Lumens measurement taken in air without crash guard				R7 = 75.8	R14 = 84.8

